

RING TORSION LOAD CELL

MN-RT5



DESCRIPTION

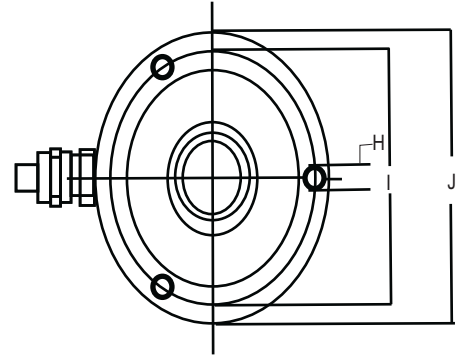
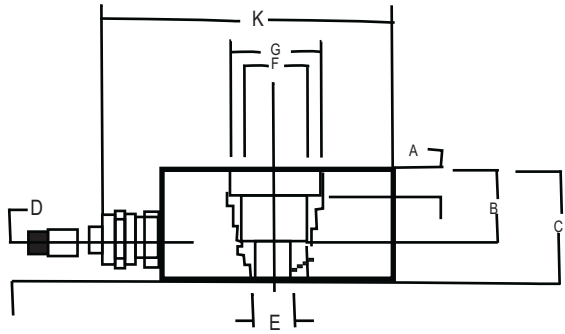
This is a low profile, high performance stainless steel ring torsion type load cell. The fully welded construction and glass-to-metal cable-entry ensure that this product can be used successfully in harsh environments found in the food, chemical and allied process industries. This product is suitable for small and medium platform scales, hoppers and process weighing.

APPLICATIONS

- Platform scales
- Belt scales
- Silo hopper weighing

FEATURES

- Capacity range: 250kg to 60 ton
- Low profile, stainless steel construction
- Hermetically sealed, IP66/68
- Meets OIML R-60, 6000d
- Outputs are matched to ensure easy and accurate parallel connection of multiple load cells



PARAMETER	VALUE	UNIT
Rated Output (=S)	2.0	mV/V
Output Accuracy for multiple LC system	0.02	$\pm\%$ mV/V
Zero balance	1.0	$\pm\%$ FSO
Combined Error	0.0300	$\pm\%$ FSO
Creep Error (30 minutes)	0.0245	$\pm\%$ FSO
Temperature Effect On Zero	0.0070	$\pm\%$ FSO/5°C
Temperature effect on Sensivity	0.0050	$\pm\%$ FSO/5°C
Minimum dead Load	0	%Emax
Maximum Safe Overload	150	%Emax
Ultimate Overload	300	%Emax
Maximum Safe Side load	100%up to 10 ton 50% for 28 & 60 ton	%Emax
Excitation voltage	5 to 15	V
Maximum Excitation voltage	30	V
Input Resistance		ohms
Output Resistance		ohms
Insulation Resistance	>5000	mega-ohms
Compensated temperature range	-10 to +40	°C
Operating temperature range	-30 to +70	°C
Storage temperature range	-50 to +80	°C
Construction	Stainless Steel	
Environmental protection	IP 67	